



E&V ID W-0302CZ

IBIZA — IBIZA TOWN

Luxurious Home with an Exceptional Layout

TOTAL SURFACE

approx. 590 m²

NUMBER OF BEDROOMS

5

TERRACE SIZE

approx. 145 m²

ASKING PRICE

€8,120,000



Property Details

Total Surface	Terrace Size	Number of Bedrooms
approx. 590 m ²	approx. 145 m ²	5
Asking price	Total Number of Bathrooms	Views
€8,120,000	approx. 5	Harbour View, Water View
Total Number of Parking Bays	Terrace	Air-Condition
1	approx.	approx. Fully Air-conditioned
Heating	Year of construction	
approx. Heat Pump (Underfloor Heating, Underfloor Heating)	2024	

Commission Text

Availability upon agreement.
Engel & Völkers does not accept responsibility as the information provided in this brochure is for information only and it is subject to errors, omissions, change of price or withdrawal without notice.

Taxes, notary and registry fees must be paid by purchaser, the commission to E&V paid by the seller as stipulated by Spanish regulations.



Property Description

In one of the most sought-after locations on the island, directly at the port of Ibiza Town, this high-quality new development offers an exceptionally spacious apartment with exclusive amenities and spectacular views.

This exclusive unit features 5 spacious bedrooms, all with terrace access, as well as 5 elegant bathrooms, walk-in closets, a private basement room, and a thoughtfully designed layout that offers the highest living comfort. An underground parking space is also included in the price.

Living and sleeping areas lead to the expansive terrace, offering

impressive views of the marina and the lively promenade – the perfect place to enjoy Mediterranean outdoor living.

Designed by renowned architects Alain Moatti and Josep Ferrer Llaneras, the building stands for timeless elegance and Mediterranean sophistication. The distinctive facade captures the special light of Ibiza and blends harmoniously with the surroundings.

An exceptional property for discerning buyers seeking spaciousness, excellent design, and a prime location right in the heart of Ibiza – with the sea always in view.



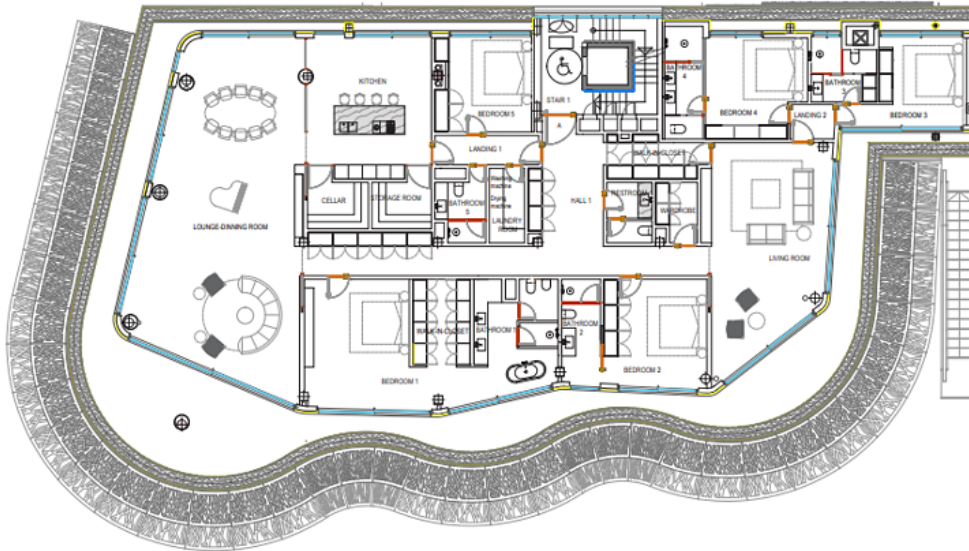
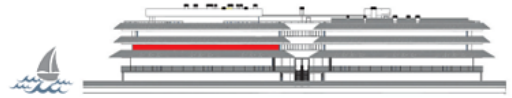












SURFACE TABLE

Bedroom 1	26,75m ²
Walk-in-closet 1	8,80m ²
Bathroom 1	18,55m ²
Living room	43,80m ²
Bedroom 2	20,00m ²
Bathroom 2	6,80m ²
Bedroom 3	16,95m ²
Bathroom 3	6,95m ²
Bedroom 4	17,35m ²
Bathroom 4	7,80m ²
Lounge-dinning room	91,65m ²
Kitchen	30,80m ²
Cellar	5,70m ²
Storage room	5,60m ²
Landing 1	5,50m ²
Landing 2	2,80m ²
Bedroom 5	16,05m ²
Bathroom 5	5,45m ²
Laundry room	4,70m ²
Hall	39,75m ²
Restroom	4,80m ²
Wardrobe	4,00m ²
Walk-in-closet 2	6,95m ²
Total Useful Surface	398,10m²

Enclosed area	448,05m ²
Computable Terrace area (100%)	145,32m ²
Total Built area	593,37m²

Floor Plan

ESCALA DE LA CALIFICACIÓN ENERGÉTICA

Consumo de energía
kW h / m² año

Emisiones
kg CO₂ / m² año

A más eficiente		
B		
C		
D	EN TRÁMITE	
E		
F		
G menos eficiente		

Important Notice

In compliance with the current Personal Data Protection Law, we inform you that your personal data were included in an automated file owned by Engel & Völkers Ibiza, S.L., with CIF B57138182 and fiscal address at Avda. Santa Eulalia, 17 bajos, 07800 Ibiza, Spain, to attend to the commitments derived from the relationship between the two parties. Engel & Völkers Ibiza, S.L. informs that all data will be handled lawfully, loyally transparently, appropriately, suitably, with restrictions, precisely and kept up to date. You may exercise your right to access, rectify, limit treatment, suppress, withdraw and oppose to your personal data treatment, as well as the consent provided for its treatment by sending your request by email to Ibiza@engelvoelkers.com.

